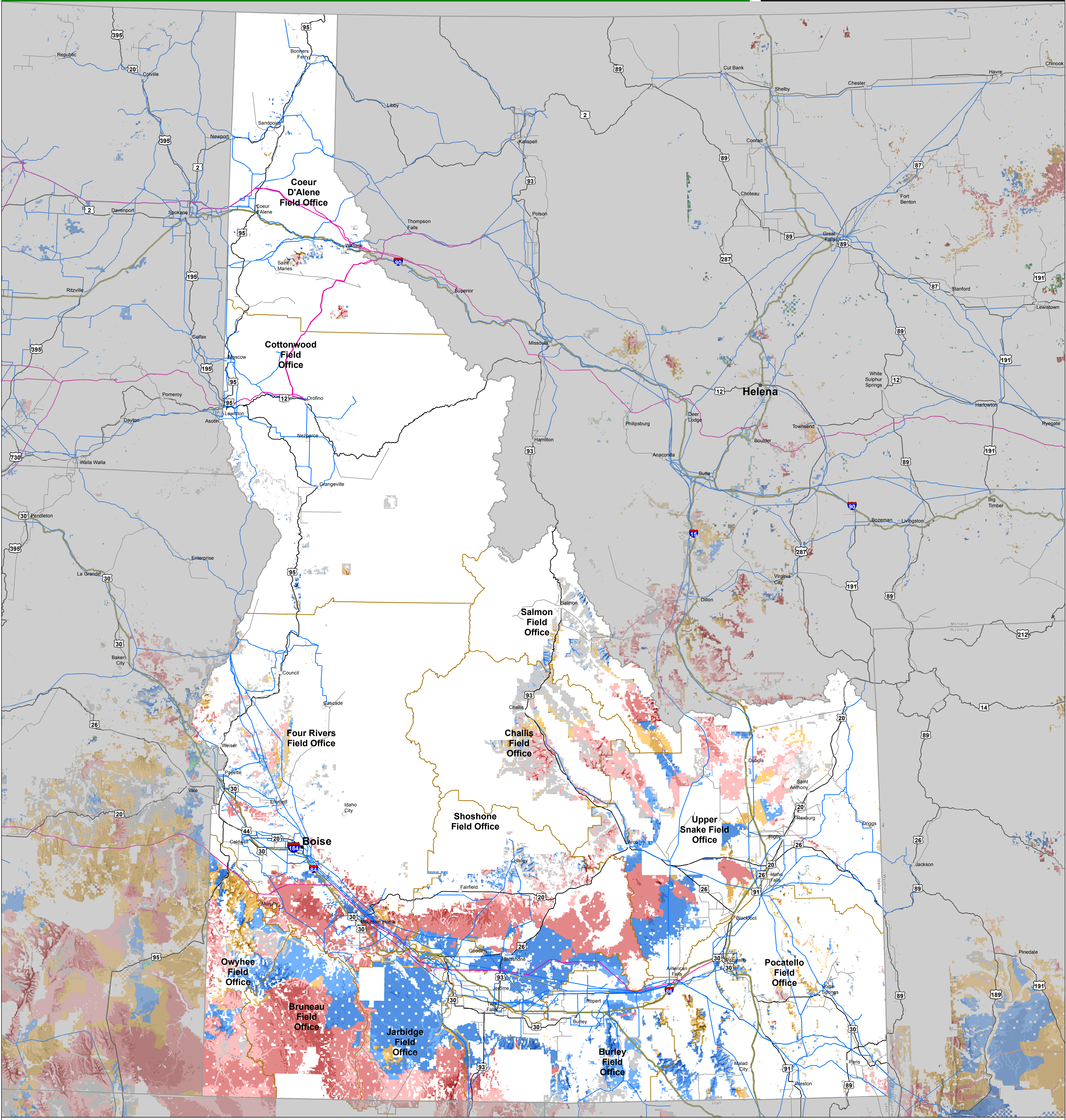


Wind Resources, Exclusions, and Resource Sensitivities on BLM-Administered Lands in Idaho

Map Prepared October 2016 (Note 1)

Property of the U.S. Department of the Interior



0 5 10 15 30 Miles

0 5 10 15 30 Kilometers

High Level of Siting Considerations

Moderate Level of Siting Considerations

Other

Interstate

U.S. Route

Existing Transmission (Note 2)

500kV - 525kV

115kV - 450kV

Below 100kV

Excluded Areas

Mapped Areas

5 6 7 8 9 10 and Greater

Wind Speed in Meters / Second (Notes 3 & 4)

On BLM-Administered Lands

Low Wind Resources (below 5 m/sec)

National Scenic Trail

Other Designated NLC Lands (Note 7)

Properties Listed on the National Register of Historic Places

Resource Management Plan Wind Exclusion Area

Right of Way Exclusion Area

Sage Grouse Priority Habitat Management Area, except in Wyoming, and Lake, Malheur, and Harney Counties in Oregon

Sagebrush Focal Area, except in Wyoming

Special Recreation Management Areas in California, not in the DRECP

Land Acquired with Federal Funds for Conservation Purposes

Land Inventory and Managed for Wilderness Characteristics

National Conservation Area (Note 6)

National Historic Landmark

National Historic Park / Site

National Historic Trail

National Monument

National Natural Landmark on BLM-Administered Land

Area of Critical Environmental Concern

DRECP California Desert National Conservation Land (Note 5)

DRECP Development Focus Area Restricted to Solar and/or Geothermal Energy

DRECP National Scenic Cooperative Management Area

DRECP Off-Highway Vehicle Area

DRECP Special Recreation Management Area

DRECP Wildlife Allocation

Land Acquired with Federal Funds for Conservation Purposes

Land Inventory and Managed for Wilderness Characteristics

National Conservation Area (Note 6)

National Historic Landmark

National Historic Park / Site

National Historic Trail

National Monument

National Natural Landmark on BLM-Administered Land

High Level of Siting Considerations

Moderate Level of Siting Considerations

California Condor, Golden Eagle, and Aplomado Falcon

Northern Spotted Owl Designated Critical Habitat

DRECP Extensive Recreation Management Area

Department of Defense Area of High Risk of Adverse Impact

Desert Tortoise Designated Critical Habitat

Designated BLM Utility Corridor

Designated Critical Habitat for ESA-Listed Species

No Surface Occupancy Restriction Area

Resource Management Plan Wind Avoidance Area

Right of Way Avoidance Area

Sage Grouse General Habitat Management Area, except in Idaho, Utah, and Wyoming

Sage-Grouse Priority Habitat Management Area in Wyoming, and Lake, Malheur, and Harney Counties in Oregon

Sagebrush Focal Area in Wyoming

Utah Test and Training Range

Visual Resource Management Class II Area

Moderate Level of Siting Considerations

Bald Eagle, Golden Eagle, and Aplomado Falcon

Potentially Suitable Habitat Distribution (Note 8)

BLM Back-Country Byway

DRECP Variance Land

Department of Defense Restricted Airspace and Military Training Route

Desert Wildlife Management Area

Designated Special Status Species Management Area

Important Bird Area

Land Purchased by Private Funds and Donated to BLM

Long Term Visitor Use Area

National Scenic Highway / All American Road

NPS-Identified Area of High Potential Resource Conflict

Off Highway Vehicle Open Area, except in DRECP

Sage-Grouse General Habitat Management Area in Idaho, Utah, and Wyoming

Sharp-Tailed Grouse Habitat

Special Recreation Management Area, except in California

State Scenic Highway

Visual Resource Management Class III Area

USFWS-Identified Priority Desert Tortoise Connectivity Area

Wildlife Management Areas, except in California

Note 1

This map was constructed using the best available geospatial data and may contain errors. Geospatial data are not complete across the mapped area for some resources. Acreage estimates are based on BLM State Office boundaries, which in some cases differ slightly from state boundaries. Mapping is intended for use in large-scale wind energy planning and is not suitable for individual project siting or review. Topography, roadway accessibility, economic factors, and other resources were not considered in this mapping effort. Appendix 6 of the West-Wide Wind Mapping Project Final Report identifies the geospatial data layers used in this effort. The final report may be found at <http://wvwmap.ari.gov/>.

Note 2

Source: Platts. Copyright 2016 by McGraw Financial.

Note 3

Wind speed shown on BLM-administered land is for a hub height of 80 meters using data provided by AWS Truepower, LLC (www.truepower.com).

Note 4

Excluded lands include those lands that are excluded from wind development on the basis of existing land use plan decisions and potential policy changes. Wind projects proposed on BLM-administered lands that are not excluded will have varying levels of siting considerations during siting reviews due to the presence of certain environmental resources or land use restrictions. Some potentially developable lands will have a high level of siting considerations, and some will have a moderate level of siting considerations. Other BLM-administered lands with potentially developable wind resources do not have known environmental resources or land use restrictions that are likely to require more extensive consideration in siting reviews. Lands with wind speeds below 5 m/sec are not considered to be developable and have not been mapped with respect to exclusion or expected level of siting considerations.

Note 5

Decisions made as part of the Desert Renewable Energy Conservation Plan (DRECP) have been incorporated into this map as reflected in the DRECP Record of Decision issued in September 2016.

Note 6

Although it is a National Conservation Area, the California Desert Conservation Area is not excluded from wind energy development.

Note 7

Other designated NLC lands include Cooperative Management and Protection Areas, National Forest Reserves, and Outstanding Natural Areas.

Note 8

Potentially suitable habitat distribution is determined on the basis of distribution models that represent areas where species are predicted to occur based on habitat associations. These distribution models are developed as part of the U.S. Geological Survey Southwest Regional Gap Analysis Project.