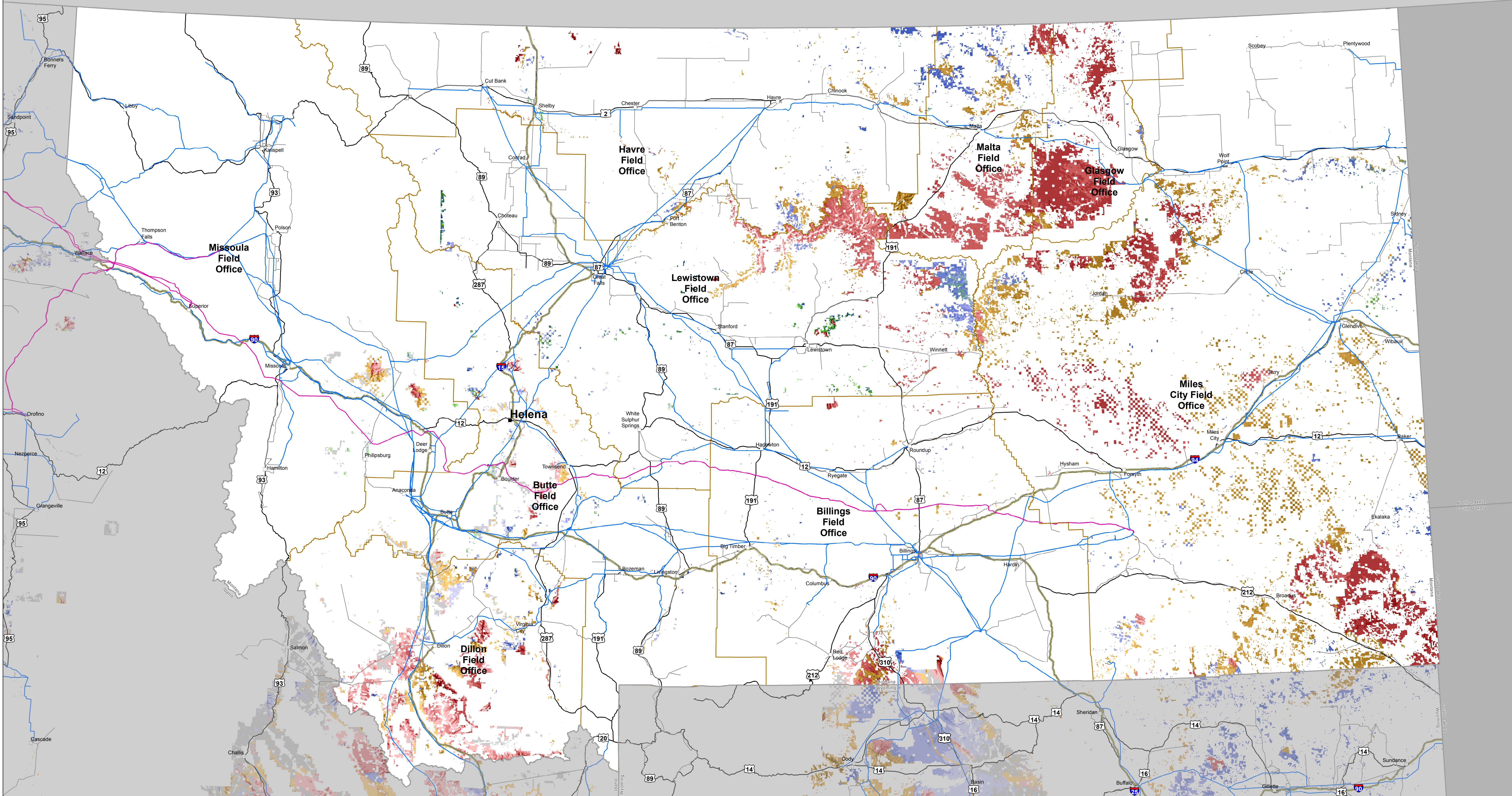


# Wind Resources, Exclusions, and Resource Sensitivities on BLM-Administered Lands in Montana

Map Prepared October 2016 (Note 1)

Property of the U.S. Department of the Interior



Interstate  
U.S. Route  
Existing Transmission (Note 2)  
500kV - 525kV  
115kV - 450kV  
Below 100kV

High Level of Siting Considerations  
Moderate Level of Siting Considerations  
Other

Potentially Developable Areas  
1,917,477 acres  
734,068 acres  
87,906 acres

Wind Speed in Meters / Second (Notes 3 & 4)  
On BLM-Administered Lands

BLM Administrative Boundary  
Low Wind Resources (below 5 m/sec)

## Exclusions

Area of Critical Environmental Concern  
DRECP-California Desert National Conservation Land (Note 5)  
DRECP Development Focus Area Restricted to Solar and/or Geothermal Energy  
DRECP National Scenic Cooperative Management Area  
DRECP OR-Highway Vehicle Area  
DRECP Special Recreation Management Area  
DRECP Wildlife Allocation  
Land Acquired with Federal Funds for Conservation Purposes  
Land Inventoried and Managed for Wilderness Characteristics  
National Conservation Area (Note 6)  
National Historic Landmark  
National Historic Park / Site  
National Historic Trail  
National Monument  
National Natural Landmark on BLM-Administered Land

## High Level of Siting Considerations

California Condor, Mexican Spotted Owl, and Northern Spotted Owl Designated Critical Habitat  
DRECP Extensive Recreation Management Area  
Department of Defense Area of High Risk of Adverse Impact  
Desert Tortoise Designated Critical Habitat  
Designated BLM Utility Corridor  
Designated Critical Habitat for ESA-Listed Species  
No Surface Occupancy Restriction Area  
Resource Management Plan Wind Avoidance Area  
Right of Way Avoidance Area  
Sage-Grouse General Habitat Management Area, except in Idaho, Utah, and Wyoming  
Sage-Grouse Priority Habitat Management Area in Wyoming, and Lake, Malheur, and Harney Counties in Oregon  
Sagebrush Focal Area, except in Wyoming  
Special Recreation Management Areas in California, not in the DRECP  
Visual Resource Management Class I Area  
Wild and Scenic River  
Wilderness Area  
Wilderness Study Area

## Moderate Level of Siting Considerations

Bald Eagle, Golden Eagle, and Aplomado Falcon Potentially Suitable Habitat Distribution (Note 8)  
BLM Back-County Bwyway  
DRECP Variance Land  
Department of Defense Restricted Airspace and Military Training Route  
Desert Wildlife Management Area  
Designated Special Status Species Management Area  
Important Bird Area  
Land Purchased by Private Funds and Donated to BLM Long Term Visitor Use Area  
National Scenic Highway / All American Road  
NPS-Identified Area of High Potential Resource Conflict  
Off Highway Vehicle Open Area, except in DRECP  
Sage-Grouse General Habitat Management Area in Idaho, Utah, and Wyoming  
Sharp-Tailed Grouse Habitat  
Special Recreation Management Area, except in California  
State Scenic Highway  
Visual Resource Management Class III Area  
USFWS-Identified Priority Desert Tortoise Connectivity Area  
Wildlife Management Areas, except in California

## Note 1

This map was constructed using the best available geospatial data and may contain errors. Geospatial data are not complete across the mapped area for some resources. Acreage estimates are based on BLM State Office boundaries, which in some cases offer slightly from state boundaries. Mapping is intended for use in large-scale wind energy planning and is not suitable for individual project siting or review. Topography, roadway accessibility, economic factors, and other resources were not considered in this mapping effort. Appendix B of the West-Wide Wind Mapping Project Final Report identifies the geospatial data layers used in this effort. The final report may be found at <http://www.westwindmap.org/>.

## Note 2

Source: Platts, Copyright 2016 by McGraw Financial.

## Note 3

Wind speed shown on BLM-administered land is for a hub height of 80 meters using data provided by AWS TruPower, LLC ([www.aws-trupower.com](http://www.aws-trupower.com)).

## Note 4

Excluded lands include those lands that are excluded from wind development on the basis of existing land use plan decisions and potential policy changes. Wind projects proposed on BLM-administered lands that are not excluded will have varying levels of siting considerations during siting reviews due to the presence of certain environmental resources or land use restrictions. Some potentially developable lands will have a high level of siting considerations, and some will have a moderate level of siting considerations. Other BLM-administered lands with potentially developable wind resources do not have known environmental resources or land use restrictions that are likely to require more extensive consideration in siting reviews. Lands with wind speeds below 5 m/sec are not considered to be developable and have not been mapped with respect to exclusions or expected level of siting considerations.

## Note 5

Decisions made as part of the Desert Renewable Energy Conservation Plan (DRECP) have been incorporated into this map as reflected in the DRECP Record of Decision issued in September 2016.

## Note 6

Although it is a National Conservation Area, the California Desert Conservation Area is not excluded from wind energy development.

## Note 7

Other designated NLCS lands include Cooperative Management and Protection Areas, National Forest Reserves, and Outstanding Natural Areas.

## Note 8

Potentially suitable habitat distribution is determined on the basis of distribution models that represent areas where species are predicted to occur based on habitat associations. These distribution models are developed as part of the U.S. Geological Survey Southwest Regional Gap Analysis Project.