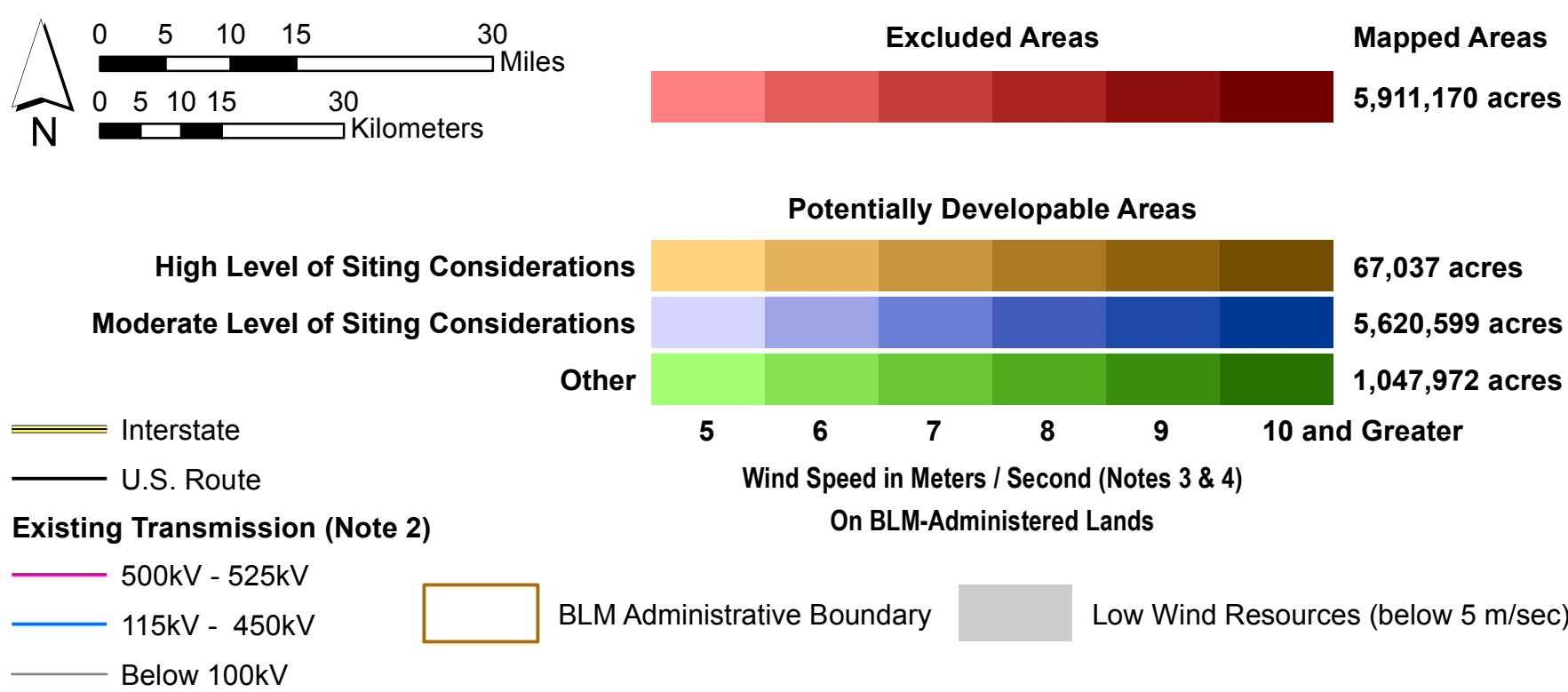
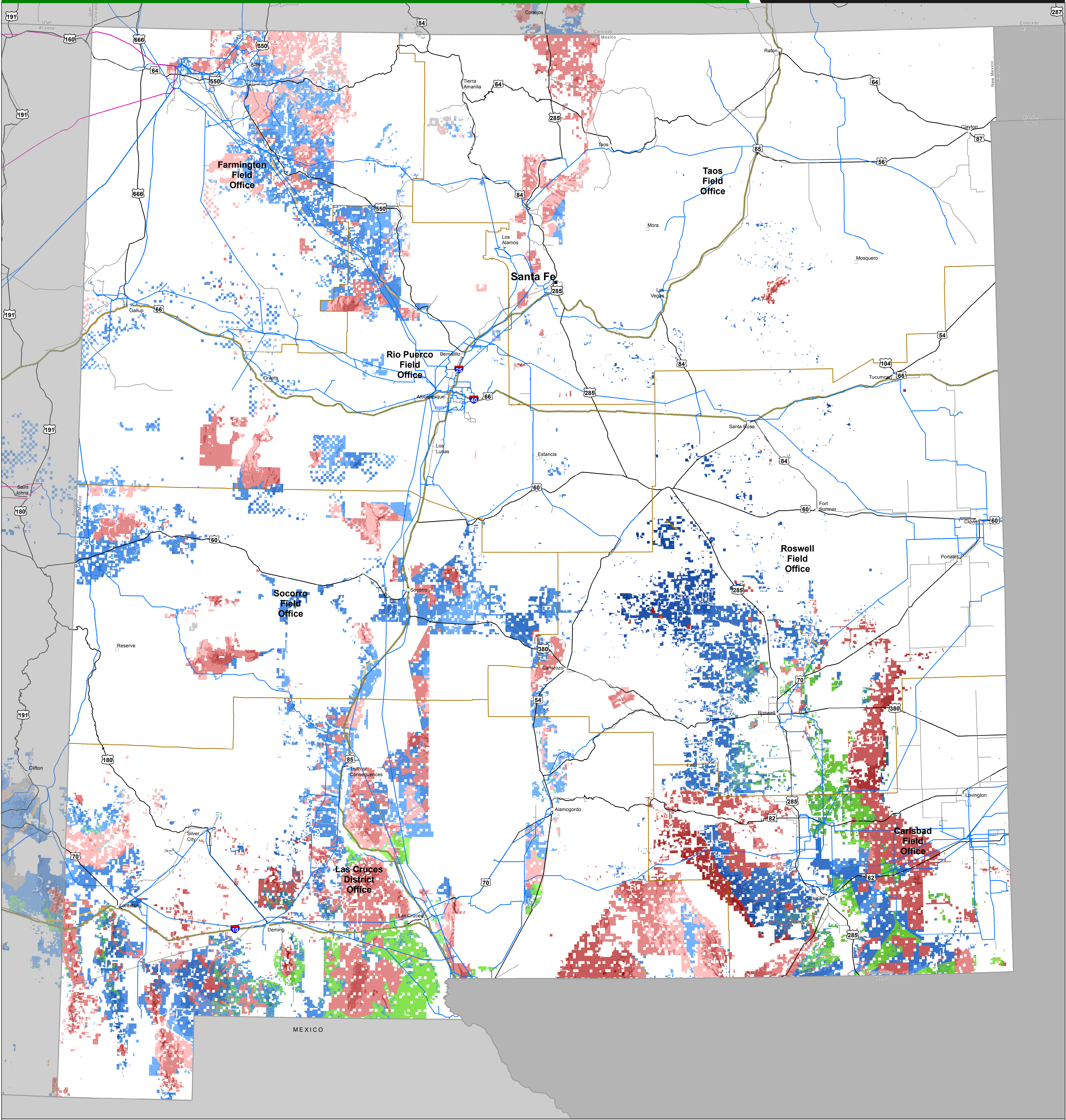


Wind Resources, Exclusions, and Resource Sensitivities on BLM-Administered Lands in New Mexico

Map Prepared October 2016 (Note 1)

Property of the U.S. Department of the Interior



Exclusions

- Area of Critical Environmental Concern
- DRECP California Desert National Conservation Land (Note 5)
- DRECP Development Focus Area Restricted to Solar and/or Geothermal Energy
- DRECP National Scenic Cooperative Management Area
- DRECP Off-Highway Vehicle Area
- DRECP Special Recreation Management Area
- DRECP Wildlife Allocation
- Land Acquired with Federal Funds for Conservation Purposes
- Land Inventory and Managed for Wilderness Characteristics
- National Conservation Area (Note 6)
- National Historic Landmark
- National Historic Trail
- National Monument
- National Natural Landmark on BLM-Administered Land

High Level of Siting Considerations

- California Condor, Mexican Spotted Owl, and Northern Spotted Owl Designated Critical Habitat
- DRECP Extensive Recreation Management Area
- Department of Defense Area of High Risk of Adverse Impact
- Desert Tortoise Designated Critical Habitat
- Designated BLM Utility Corridor
- Designated Critical Habitat for ESA-Listed Species
- No Surface Occupancy Restriction Area
- Resource Management Plan Wind Avoidance Area
- Sage-Grouse General Habitat Management Area, except in Idaho, Utah, and Wyoming
- Sage-Grouse Priority Habitat Management Area in Wyoming, and Lake, Malheur, and Harney Counties in Oregon
- Visual Resource Management Class I Area
- Wild and Scenic River
- Wilderness Area
- Wilderness Study Area

Moderate Level of Siting Considerations

- Bald Eagle, Golden Eagle, and Aplomado Falcon
- Potentially Suitable Habitat Distribution (Note 8)
- BLM Back-Country Byway
- DRECP Variance Land
- Department of Defense Restricted Airspace and Military Training Route
- Desert Wildlife Management Area
- Designated Special Status Species Management Area
- Important Bird Area
- Land Purchased by Private Funds and Donated to BLM
- Long Term Visitor Use Area
- National Scenic Highway / All American Road
- NPS-Identified Area of High Potential Resource Conflict
- Off-Highway Vehicle Open Area, except in DRECP
- Sage-Grouse General Habitat Management Area in Idaho, Utah, and Wyoming
- Sharp-Tailed Grouse Habitat
- Special Recreation Management Area, except in California
- State Scenic Highway
- Visual Resource Management Class III Area
- USFWS-Identified Priority Desert Tortoise Connectivity Area
- Wildlife Management Areas, except in California

Note 1
This map was constructed using the best available geospatial data and may contain errors. Geospatial data are not complete across the mapped area for some resources. Acreage estimates are based on BLM State Office boundaries, which in some cases differ slightly from state boundaries. Mapping is intended for use in large-scale wind energy planning and is not suitable for individual project siting or review. Topography, roadway accessibility, economic factors, and other resources were not considered in this mapping effort. Appendix 6 of the West-Wide Wind Mapping Project Final Report identifies the geospatial data layers used in this effort. The final report may be found at <http://www.wvwmap.org/>.

Note 2
Source: Platts. Copyright 2016 by McGraw-Hill Financial.

Note 3
Wind speed shown on BLM-administered land is for a hub height of 80 meters using data provided by AWS Truepower, LLC (www.aws-truepower.com).

Note 4
Excluded lands include those lands that are excluded from wind development on the basis of existing land use plan decisions and potential policy changes. Wind projects proposed on BLM-administered lands that are not excluded will have varying levels of siting considerations during siting reviews due to the presence of certain environmental resources or land use restrictions. Some potentially developable lands will have a high level of siting considerations, and some will have a moderate level of siting considerations. Other BLM-administered lands with potentially developable wind resources do not have known environmental resources or land use restrictions that are likely to require more extensive consideration in siting reviews. Lands with wind speeds below 5 m/sec are not considered to be developable and have not been mapped with respect to exclusions or expected level of siting considerations.

Note 5
Decisions made as part of the Desert Renewable Energy Conservation Plan (DRECP) have been incorporated into this map as reflected in the DRECP Record of Decision issued in September 2016.

Note 6
Although it is a National Conservation Area, the California Desert Conservation Area is not excluded from wind energy development.

Note 7
Other designated NLC lands include Cooperative Management and Protection Areas, National Forest Reserves, and Outstanding Natural Areas.

Note 8
Potentially suitable habitat distribution is determined on the basis of distribution models that represent areas where species are predicted to occur based on habitat associations. These distribution models are developed as part of the U.S. Geological Survey Southwest Regional Gap Analysis Project.