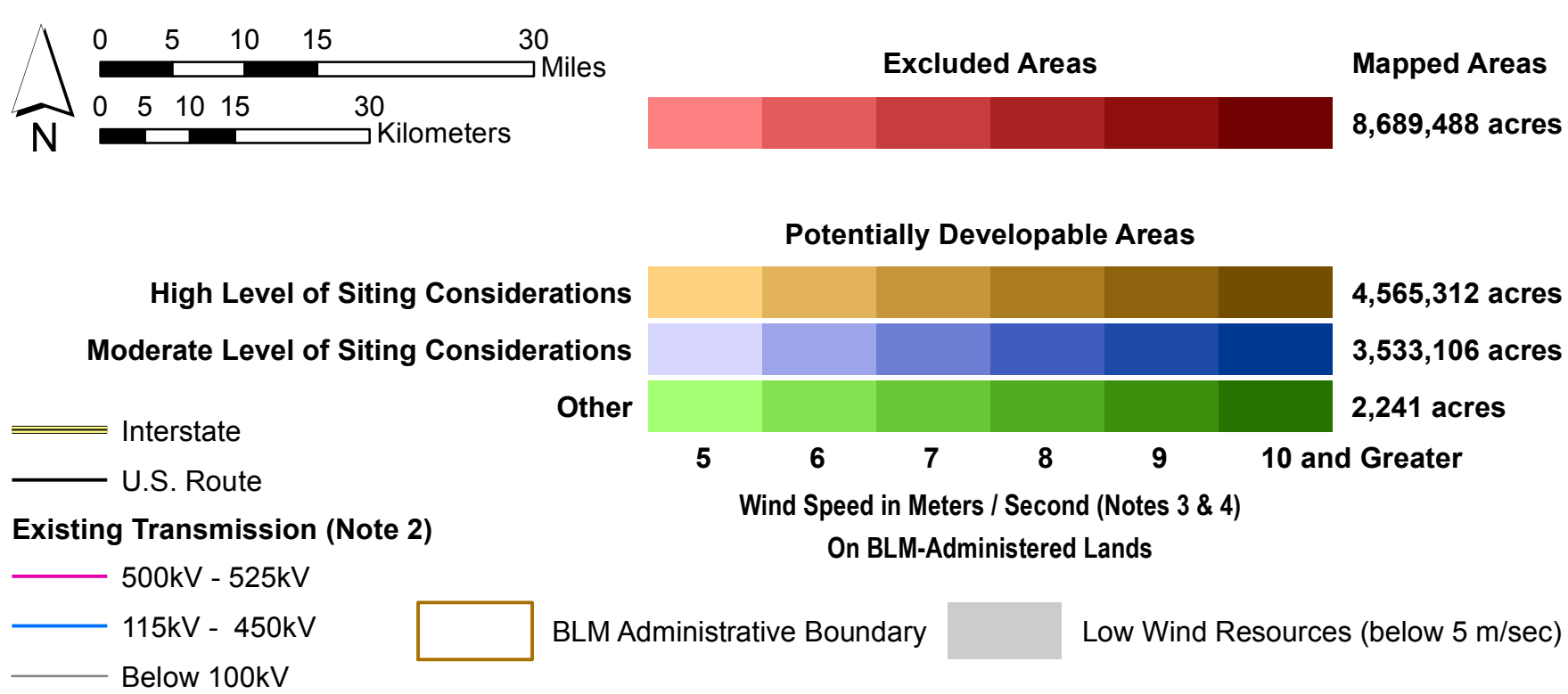
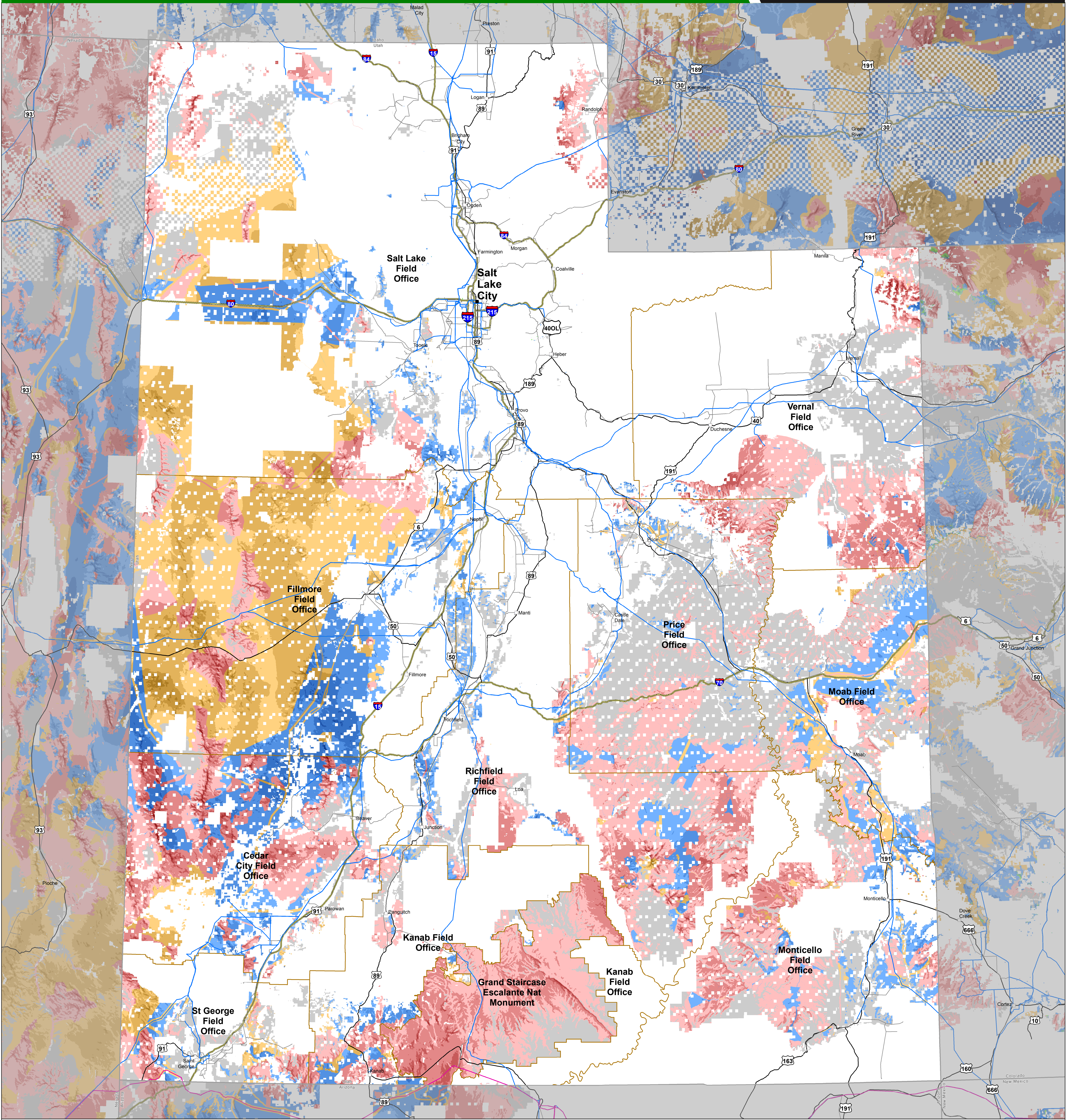


Wind Resources, Exclusions, and Resource Sensitivities on BLM-Administered Lands in Utah

Map Prepared October 2016 (Note 1)

Property of the U.S. Department of the Interior



Exclusions

Area of Critical Environmental Concern
DRECP California Desert National Conservation Land (Note 5)
DRECP Development Focus Area Restricted to Solar and/or Geothermal Energy
DRECP National Science Cooperative Management Area
DRECP Off-Highway Vehicle Area
DRECP Special Recreation Management Area
DRECP Wildlife Allocation
Land Acquired with Federal Funds for Conservation Purposes
Land Inventoried and Managed for Wilderness Characteristics
National Conservation Area (Note 6)
National Historic Landmark
National Historic Trail
National Monument
National Natural Landmark on BLM-Administered Land

High Level of Siting Considerations

California Condor, Mexican Spotted Owl, and Northern Spotted Owl Designated Critical Habitat
DRECP Extensive Recreation Management Area
Department of Defense Area of High Risk of Adverse Impact
Desert Tortoise Designated Critical Habitat
Designated BLM Utility Corridor
Designated Critical Habitat for ESA-Listed Species
No Surface Occupancy Restriction Area
Resource Management Plan Wind Avoidance Area
Right of Way Avoidance Area
Sage-Grouse General Habitat Management Area, except in Idaho, Utah, and Wyoming
Sage-Grouse Priority Habitat Management Area in Wyoming, and Lake, Malheur, and Harney Counties in Oregon
Sagebrush Focal Area in Wyoming
Utah Test and Training Range
Visual Resource Management Class II Area

Moderate Level of Siting Considerations

Bald Eagle, Golden Eagle, and Aplomado Falcon
Potentially Suitable Habitat Distribution (Note 8)
BLM Back-Country Byway
DRECP Variance Land
Department of Defense Restricted Airspace and Military Training Route
Desert Wildlife Management Area
Designated Special Status Species Management Area
Important Bird Area
Land Purchased by Private Funds and Donated to BLM
Long Term Visitor Use Area
National Science Highway / All American Road
NPS-Identified Area of High Potential Resource Conflict
Off Highway Vehicle Open Area, except in DRECP
Sage-Grouse General Habitat Management Area in Idaho, Utah, and Wyoming
Sharp-Tailed Grouse Habitat
Special Recreation Management Area, except in California
State Scenic Highway
Visual Resource Management Class III Area
USFWS-Identified Priority Desert Tortoise Connectivity Area
Wildlife Management Areas, except in California

Note 1
This map was constructed using the best available geospatial data and may contain errors. Geospatial data are not complete across the mapped area for some resources. Acreage estimates are based on BLM State Office boundaries, which in some cases differ slightly from state boundaries. Mapping is intended for use in large-scale wind energy planning and is not suitable for individual project siting or review. Topography, roadway accessibility, economic factors, and other resources were not considered in this mapping effort. Appendix 6 of the West-Wide Wind Mapping Project Final Report identifies the geospatial data layers used in this effort. The final report may be found at <http://wewmp.anl.gov/>.

Note 2
Source: Platts. Copyright 2016 by McGraw Financial.

Note 3
Wind speed shown on BLM-administered land is for a hub height of 80 meters using data provided by AWS Truepower, LLC (www.awstruepower.com/).

Note 4
Excluded lands include those lands that are excluded from wind development on the basis of existing land use plan decisions and potential policy changes. Wind projects proposed on BLM-administered lands that are not excluded will have varying levels of siting considerations during siting reviews due to the presence of certain environmental resources or land use restrictions. Some potentially developable lands will have a high level of siting considerations, and some will have a moderate level of siting considerations. Other BLM-administered lands with potentially developable wind resources do not have known environmental resources or land use restrictions that are likely to require more extensive consideration in siting reviews. Lands with wind speeds below 5 m/sec are not considered to be developable and have not been mapped with respect to exclusion or expected level of siting considerations.

Note 5
Decisions made as part of the Desert Renewable Energy Conservation Plan (DRECP) have been incorporated into this map as reflected in the DRECP Record of Decision issued in September 2016.

Note 6
Although it is a National Conservation Area, the California Desert Conservation Area is not excluded from wind energy development.

Note 7
Other designated NLCs include Cooperative Management and Protection Areas, National Forest Reserves, and Outstanding Natural Areas.

Note 8
Potentially suitable habitat distribution is determined on the basis of distribution models that represent areas where species are predicted to occur based on habitat associations. These distribution models are developed as part of the U.S. Geological Survey Southwest Regional Gap Analysis Project.